

FIRST TRACE, INC

Kinnosa Release Bulletin

Release Version 5.0

Server 5.0.213/Client 5.0.54



First Trace
Inc.

First Trace, Inc.
9830 South 51st Street
Suite A124
Phoenix, AZ 85044 USA
+1.480.940.2393
www.FirstTrace.com

Copyright © 2008-2011 First Trace, Inc.

All rights reserved.

Information in this document is subject to change without notice and does not represent a commitment on the part of First Trace, Inc. The software described in this bulletin is furnished under licenses or distribution agreements and may be used or copied only in accordance with the terms of such agreements. It is against the law to copy the software on any medium except as specifically allowed in the agreements. No part of this document may be reproduced or transmitted in any form or by any means, electronic or mechanical, including photocopying, recording, or information storage and retrieval systems, for any purpose other than the licensee's internal use, without the express written permission.

First Trace, Inc. Trademarks

First Trace, the First Trace logo, Korrigio, the Korrigio logo, *Kinnosa*, the *Kinnosa* logo, *Kinnosa Workflow*, *Kinnosa Enterprise Document Management*, *Kinnosa Open Platform Services*, *Kinnosa Process Manager*, *Kinnosa Java Content Repository*, *Kinnosa Cooperative Change Management*, *Kinnosa Solution Packs*, *Kinnosa Content Management*, *Kinnosa Interposit* and *Kinnosa Data Transformation and Publishing*, Product Biography, and Narrative Goods, all trademarks that contain *Kinnosa* and certain other trademarks and logos appearing on the First Trace Website, are trademarks or registered trademarks of First Trace, Inc. in the United States and other countries.

Other Trademarks

Adobe, the Adobe logo, Acrobat, and the Acrobat logo are trademarks of Adobe Systems Incorporated. Autodesk, the Autodesk logo, AutoCAD, Design Review DWG TrueView, Inventor and Inventor View are trademarks of Autodesk, Inc. SolidWorks, eDrawings, DWGeditor, eDrawings Professional, PDMWorks Advanced Server, and PDMWorks are trademarks or registered trademarks of Dassault Systems SolidWorks Corporation in the United States and other countries. MicroStation, BentleyView, and Bentley Redline are registered trademarks of Bentley Systems, Inc. Active Directory, ActiveX, BackOffice, Microsoft, Microsoft SQL Server, Visual Basic, Visual C++, Visual Studio, Win32, Win64, Windows 2007, Windows 2003, Windows 2000, Windows, Windows NT, Windows XP and Windows Vista are trademarks of Microsoft Corporation. Other marks are the Property of their respective owners and are used for identification only.

This document is the *Kinnosa* Release Notes for *Kinnosa* release version 5.0 (Server Version 5.0.213, Client Version 5.0.54). This document highlights the primary updates implemented in *Kinnosa 5.0* including its multiple interface integrations with Windows Explorer, AutoCAD, SolidWorks, MicroStation, Inventor, the MS Office Suite and Open Office.

© 2008-2011 First Trace, Inc.

All rights reserved. No part of this document may be reproduced or transmitted in any form or by any means, electronic or mechanical, including photocopy, recording, or any information storage and retrieval system, without permission from First Trace, Inc.

Table of Contents

Overview	1
System Requirements	2
Server Requirement	2
Hardware	2
Software.....	2
Client Requirement.....	2
Hardware	2
Software.....	2
Installation and Upgrade	3
New Installations	3
Upgrade to 5.0	3
Server	3
Client.....	7
Known Issues for <i>Kinnosa 5.0</i>.....	8
Feature Enhancements and Bug Fixes for <i>Kinnosa 5.0</i>	10
Documentation Updates for <i>Kinnosa 5.0</i>.....	12

Overview

This release bulletin provides information regarding the *Kinnosa 5.0* release for Server version 5.0.213 and Client version 5.0.53. This bulletin contains system requirements and the steps for the installation of both the server and client upgrade from earlier versions of *Kinnosa* to *Kinnosa* version 5.0. Also included are a listing of the primary bug fixes, enhancements, known issues and key changes to the *Kinnosa* documentation.

A complete set of documents are now available at www.FirstTrace.com.

Kinnosa 5.0 integrates with the following applications:

- ▶ AutoCAD 2008, 2009, 2010, and 2011
- ▶ MicroStation V8, SM, V8i (SELECT Series 1)
- ▶ Solidworks 2010, 2011, 2012
- ▶ Inventor 2010, 2011
- ▶ Microsoft Office Word, Excel and Powerpoint 2007, 2010
- ▶ Open Office 3.0 and higher

First Trace also offers a full complement of Certification Training Courses to enable you and your users to become proficient in the use of *Kinnosa*. To learn more about *Kinnosa 5.0* and available training courses, go to www.FirstTrace.com.

System Requirements

Prior to installation you need to ensure your hardware and software meet the requirements for both your server and your client. The **minimum** requirements are as follows:

Server Requirement

Hardware

Memory (RAM): 4 GB (minimum)

Disk Space: 50 GB (recommended)

Processor: Single processor, 2.5 GHz Pentium4 (minimum), 32-bit 1.8 GHz (option), 64-bit. **Dual process 2.5GHz (minimum) for 10,000+ documents or when using the eChange Upgrade Tool.**

Software

Operating System: Windows 2003 Server or Windows 2008 Server (32-bit or 64-bit).

Tego setup requires Windows 2008 Server (32-bit or 64-bit).

MS Internet Information Server (IIS) - The *Kinnosa Web* component installs to the **Default Web Site Directory** by default, the primary IP (if dual NICS installed) and port 80 must be available, and the **ASP Page** must be set to **2.0** in the **Default Web Site Properties**.

Sun Java J2SE Development kit 6.0 (JDK 1.6+).

Microsoft.NET 2.0

Database Server: Microsoft SQL Server 2005, or Microsoft SQL Server 2008 (32-bit or 64-bit), or MySQL v5.1 or higher and MySQL Administrator or Oracle 10-11G (32-bit or 64-bit).

Client Requirement

Hardware

Intel Pentium 4 or higher

1 GB RAM

1 GB of free disk space

800 x 600, 256 color display

Software

Windows XP or Windows Vista or Windows 7 (32-bit or 64-bit)

Sun Java JRE 1.6+ installed.

Supported Web Browsers: Microsoft Internet Explorer 6.0 or higher, Netscape Communicator 6.2.1+ and 7.1x and Mozilla 1.7 or higher

Installation and Upgrade

New Installations

Full instructions on installing this release on a new Windows Server system are contained in the [Kinnosa Install Guide.PDF](#) available online.

Upgrade to 5.0

Server

It is recommended that you back up the “Kinnosadata” directory before you upgrade the product; this is where your documents and metadata files are located.

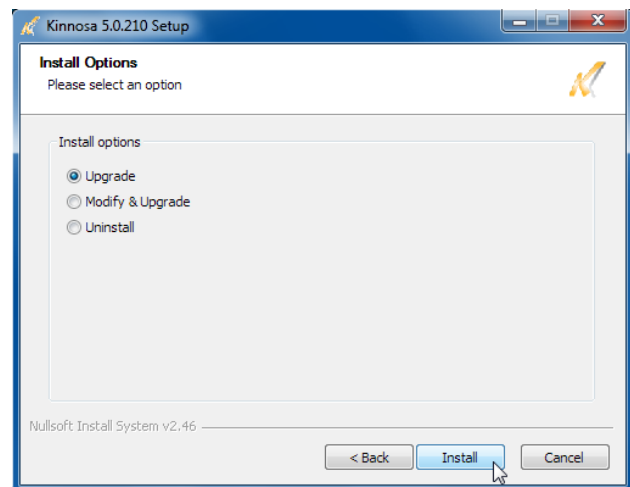
It is recommended that you backup your SQL databases (refer to the documentation provided by Microsoft for complete instructions on backing up your MS SQL database).

Complete the following steps to upgrade your server to *Kinnosa 5.0*:

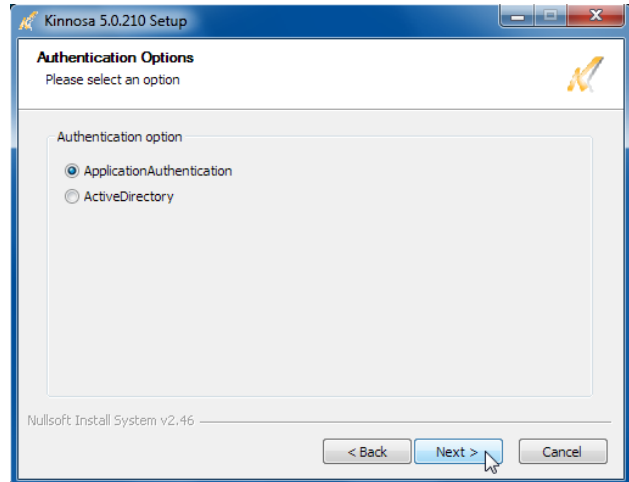
1. Double click on the **ServerSetup.exe** file.



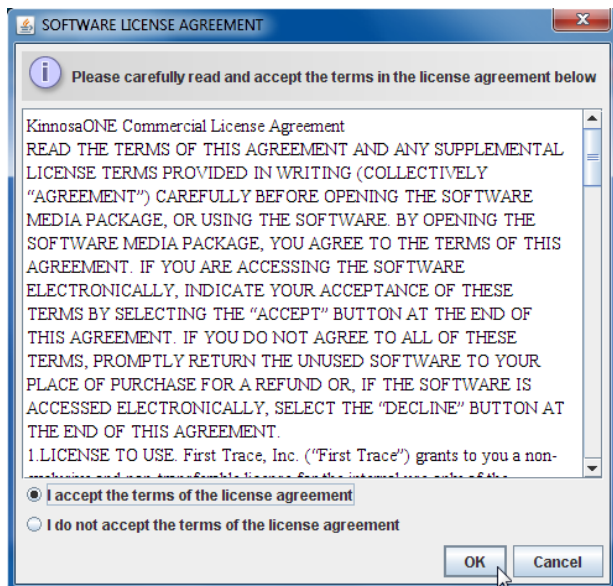
2. Select **Upgrade**.
3. Click **Install**.



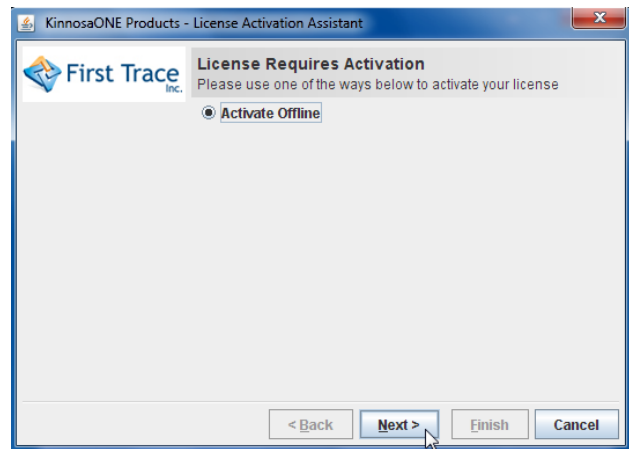
4. Select the appropriate **Authentication option**.
5. Click **Next**.



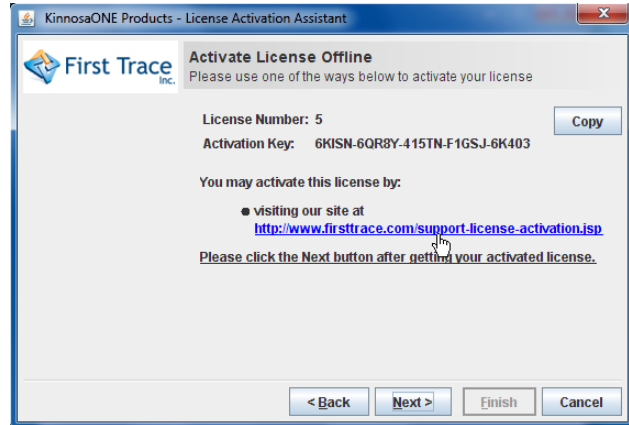
6. Accept the License Agreement.
7. Click **Next**.



8. Click **Next**.

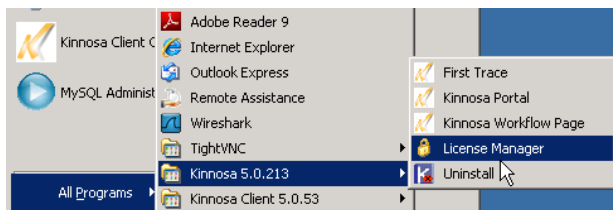


9. Click Copy to copy the License Number and Activation Key.
10. Click the link to the **License Activation** website.

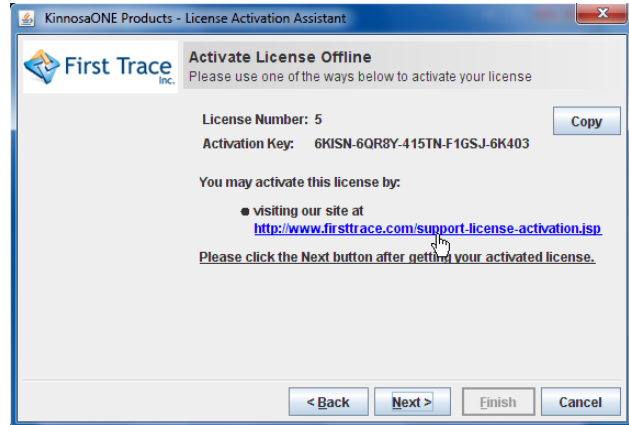



11. Click in the License Activation String field and Paste the License Number and Activation Key.
12. Complete the required fields in the form.
13. Click **Submit**.

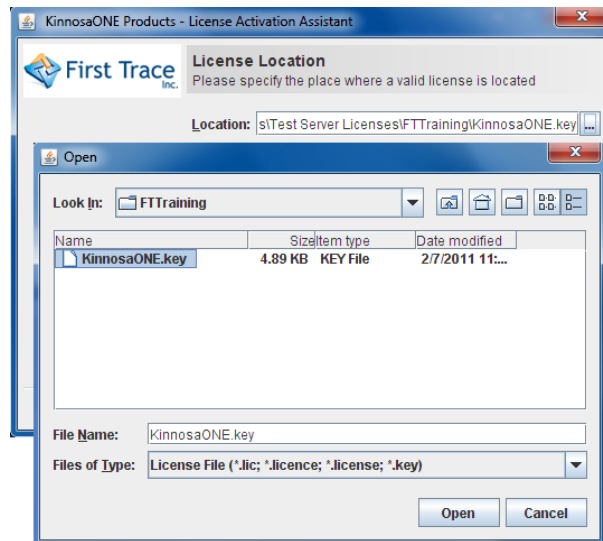
14. Once you have received the email with your **License Key**, go to the **License Manager**: Start → Programs → *Kinnosa 5.0.213* → License Manager.



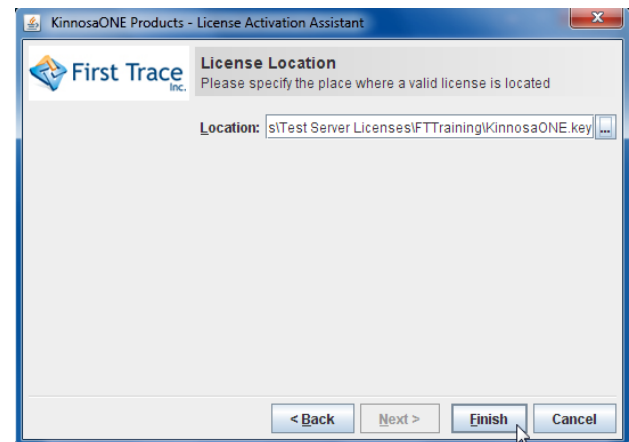
15. Return to the screen shown and click **Next**.



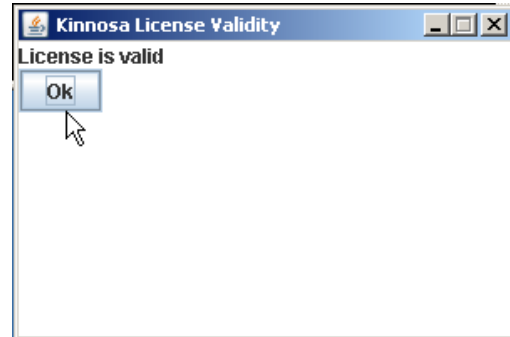
16. Click  to browse to the **License Location**.
17. Select the KinnosaOne.key.
18. Click **Open**.



19. Click **Finish**.



20. Click **OK**.
21. Restart the server.



NOTE: Once you have upgraded your server you will need to allocate floating and named licenses. Refer to the License Allocation section in the [Kinnosa 5.0 Install Guide.PDF](#), for details.

Client

1. Uninstall the *Kinnosa* Client application (**Windows Start Menu → Programs → Kinnosa Client → Uninstall Kinnosa**).
2. Restart – only if prompted.
3. Install the new version of the *Kinnosa* Client by running the ClientSetup.exe (refer to the [Kinnosa 5.0 Install Guide.PDF](#) for complete instructions on installing the *Kinnosa* client).

Known Issues for *Kinnosa 5.0*

The following details known issues for the release of *Kinnosa 5.0* (Server version 5.0.213/Client version 5.0.54):

Bug #	Description
18	<p>Documents created in the Portal client using the Add Document function are appearing as folders in Windows Explorer rather than documents.</p> <p>Workaround:</p> <p>When creating a document in the Portal client using the Add Document function, you must add the document type extension to the Name of the document (i.e. .docx, .pdf, .dwg, etc.)</p>
38	<p>Setup support required for Oracle DB if the bonita.war fails with a mapper.properties error.</p> <p>Workaround:</p> <p>The current Oracle DB setup process is manual and requires assistance from Support to work with the jar files.</p>
66	<p>A period in a folder/directory name renders the folder useless. If the folder is a subfolder of the production folder, the production folder becomes inoperative and results in a “folder not found” error message.</p> <p>Workaround:</p> <p>Remove the period from the folder/directory name.</p>
84	<p>IIS7 does not install all mime types during the installation process. There is no * mime type so documents without a mime type return a 404 error from the virtual directory.</p>
250	<p>The Copy Out function is not available in the <i>Kinnosa</i> Add-in menus.</p> <p>Workaround:</p> <p>The Copy Out function is available through the Search function in the <i>Kinnosa</i> Add-in menu.</p>
355	<p>Setup needs to check the default character set for SQL server.</p> <p>The jdbc driver parameters need to be adjusted based on the default character set of the SQL Server. If it is UTF-8, prepareSQL should be set to 2.</p> <p>For everything else, set prepareSQL=2 and append sendStringParametersAsUnicode=false; to the database URL.</p>
426	<p>Dragging and Dropping of 650MB or larger files causes an out of memory unhandled exception.</p> <p>Workaround:</p> <p>Use the Import function to place large files into the <i>Kinnosa</i> Repository.</p>

452 The Generate PDF service in Workflow throws an exception error for .docx files if the Generate Thumbnails is set to "True".

Workaround:

Set Generate Thumbnails to "False".

480 If a node (doc) type is updated with new Property values (constraints), the new values do not become active in the node (doc) types that reference the updated node until the *Kinnosa* Appserver Service is restarted.

Workaround:

Open the child nodes (doc types) in Organization Service → Node Types and select Save. This will register the changes made in the parent node (doc type).

513 Creating inherited Search folders (search folder within a search folder) requires the user to manually edit the query string.

539 If the name of a folder containing Checked Out files is modified, the Workspace xml file is corrupted and causes errors.

Workaround:

Rename the folder to the original name.

602 The Process tab in the Document Biography loses processes if the folder name containing the file has been changed.

Workaround:

Rename the folder to the original name.

627 If you create a Process Workflow which includes the Generate Renditions service and select Originator as the role in the Release Activity the Generate Rendition service errors and will not create the renditions.

Workaround:

Remove the Originator Role and reset it to Initial Role, once that is done, the DWF and PDF are created and placed in the proper folder. The "Status Updated By" property for the released file will always show KinnosaAdmin and not the actual user that released the file.

Feature Enhancements and Bug Fixes for *Kinnosa 5.0*

The following details feature enhancements and bug fixes included in the release of *Kinnosa 5.0* (Server version 5.0.213/Client version 5.0.53):

Bug #	Description
377	SMB Authentication works for the Tego server. Tego setup requires Windows 2008 Server (32-bit or 64-bit).
522	Cut and Paste functionality works within the <i>Kinnosa</i> Repository. All properties and version history is also moved to the pasted location.
541	Dragging and Dropping, Cutting and Pasting and Copying and Pasting files from an external location into the <i>Kinnosa</i> Repository will trigger the Import dialog for single files and the Bulk Import dialog for multiple files and/or folders. The option to put documents under version-control during the Import and Bulk Import processes has been added. For security purposes, you cannot Cut and Paste a file or folder from the <i>Kinnosa</i> Repository to an external location.
591	If an error occurs during the <i>Kinnosa</i> upgrade process for the server installation, an option to retry is provided.
595	The Review Critical Properties dialog no longer requires the user to input the property values twice.
599	An Access Denied message is displayed if a user does not have the appropriate security permissions to modify custom property values and/or modify security options.
603	The option to exclude files during a Bulk Import has been added which enables users to import folder hierarchies without being required to include the files.
608	The Cancel button in the Review Critical Properties dialog has been changed to Reset which allows users revert modified property values back to the original values.
611	The Workflow Web Portal has been modified to enable ALL users to access the Workflow Reports.
612	The default document type specified in the Configuration Manager now appears as the default document type in the Search dialog on the Property tab.
613	The "Any" option has been added to the <i>Kinnosa</i> Security tab.
614	An Active Instance Detail Report has been added to the Workflow reports. This report shows ALL Active workflow instances in a single report.
618	An Automated Setup/Installer and Uninstaller has been created for Tego.
628	Custom Property Linking in Microsoft Word will update custom properties within the document if the file is open and checked out. When linked custom properties are updated without checking out the file, the linked properties within the document will be updated when the document is checked out.

- 629 Autodesk Vault Migration tool is now available to migrate documents into *Kinnosa* from the Autodesk Vault.
- 644 A “Copy Current Version” option has been added to the Configuration Manager enabling users to set the option to copy out the current version of a file by default.
- 647 A user will receive a message dialog providing the option to check out a copied out part within Inventor if the user makes changes to the copied out part.

Documentation Updates for *Kinnosa 5.0*

The following details documentation updates for the release of *Kinnosa 5.0* (Server version 5.0.213/Client version 5.0.53). All *Kinnosa* Guides are now available [online](#).

Document	New Additions
<i>Kinnosa</i> Install Guide	<ol style="list-style-type: none">1. Software Requirements for Tego.2. License Manager Setup and Allocation.
<i>Kinnosa</i> User Guide	<ol style="list-style-type: none">1. Configuration Manager includes Scanner tab.2. Document Management functions:<ul style="list-style-type: none">▶ Import and Bulk Import provides versioning options.▶ Document Biography replaces View function.▶ Audit History report provides extensive details and the options to print and save.▶ OpenOffice <i>Kinnosa</i> Add-in Menu▶ Inventor <i>Kinnosa</i> Add-in Menu
<i>Kinnosa</i> Administrator Guide	<ol style="list-style-type: none">1. Taxonomy and Category setup.2. Doc Type security.3. Workflow membership.4. Creation of file hierarchies and the application of property sets.
<i>Kinnosa</i> Workflow Guide	<ol style="list-style-type: none">1. Report access update for all users.2. New report "Active Instance Detail Report".3. Workflow membership access.
<i>Kinnosa</i> Web Portal User Guide	This is a new document explaining how to access the Web Portal and details basic functionality for users.